



COMPANY PROFILE


TROLLOPE



BUSINESS IS ABOUT PEOPLE

The company's core philosophy. A lot of time and money is therefore invested in employees and the communities in which the business operates. This is done through various mechanisms including external and internal training, Learnerships, Social Economic Development programs and charity fund raising events. Trollope currently employs just over 3,000 people.

COMPANY OVERVIEW

Trollope is a market leading opencast mining contractor that specialises in the execution of medium to large scale mining projects. Alongside the full range of services associated with opencast contract mining, we also provide crushing and screening, mine infrastructure works, bulk earthworks, rehabilitation services, and plant hire.

Established in 1975, the Company boasts one of the largest equipment fleets in Africa and has, over many years in operation, gained significant experience in mining a wide range of commodities which includes but is not limited to coal, platinum, copper, andalusite, gold, phosphate, lithium, uranium, iron ore, manganese, limestone, and diamonds. We are currently operating in South Africa, Botswana and Namibia but have also executed projects in the DRC and Guinea. Our strategic intent is to continue to diversify into other mineral sectors and to grow our geographical footprint in Africa.

As a privately owned entity, the company operates upholds sound corporate principles and is acknowledged for delivering exceptional, yet flexible, services to the sector. We consistently aim for peak levels of productivity and safety, and with our customer-focused approach, we take pride in delivering quality workmanship in our operations.

Our maintenance standards set the industry benchmark, crucial for maintaining peak availability across our extensive fleet. The company aims to maintain a high degree of self-sufficiency, minimizing reliance on external suppliers or service providers.

At Trollope, we understand what is required to execute sustainable projects in difficult and remote regions. We are adaptable and accessible and enjoy the challenges that this industry brings. If you are looking for a business partner who can help you optimize the economic potential of your project, please feel free to get in touch.

COMPANY DIRECTORS

TROLLOPE SOUTH AFRICA



GUY HOPKINS

MANAGING DIRECTOR

Guy attended Kearnsey College after which he completed a higher national diploma in civil engineering at the Natal Technicon in Durban. He spent 18 years at Group Five where he held numerous positions including that of a Site Engineer, Contracts Director of Road & Engineering and Managing Director of Plant & Equipment before joining Trollope Mining Services in 2010. During his career, Guy has built up 40 years of extensive experience in the Civils & Mining Industries and has been actively involved in the strategic alignment and restructuring of the company over the last eleven years.



MTHETHELELI BUYA

DIRECTOR

Hailing from the Eastern Cape, Mthetheleli Buya attended Thubalethu High School in Fort Beaufort after which he obtained his B Juris and LLB degrees from the University of Fort Hare. In 1998 Mtheza was elected Chairman of the Housing portfolio of the Fort Beaufort Municipality and thereafter took up a position with the Health Special Investigating Unit as a forensic investigator. In 2001 he was approached by KPMG to head the Forensic and Investigative Accounting division in the Eastern Cape where after 3 years he was appointed as a director for KPMG Consulting. In 2006 he joined Real People as a director and was responsible for strategic alliances within the Real People Group. Mtheza is the owner of Sthathu, which has a number of subsidiaries with numerous equity investments in various industries.



NKOSEMNTU NIKA

DIRECTOR

Nkosemntu attended Freemantle High School in Lady Frere in where he matriculated in 1977. He then continued his tertiary education at the University of Pretoria where he obtained his Hons B Compt degree as well as a certificate in Theory of Accounting (CTA). This was followed by further studies at the University of Fort Hare from 1978 - 1980 where he completed his education by obtaining a B Comm degree, majoring in Accounting and Business Economics. Following an impressive career of holding various positions in the finance and accounting sectors for a number of different highly acclaimed institutions, Nkosemntu currently holds the position of CFO and Finance Director at Petro SA (SOC) Ltd.



MONISHA PREM

DIRECTOR

Monisha (BA, LLB, MBA) is a practicing attorney at her own law firm with over 15 years post articles experience. Monisha specialises in corporate and commercial law, and is a former investment banker specialising in deal-making. She currently serves on various boards, has authored a book and is passionate about entrepreneurship.

TROLLOPE GROUP



JESSICA MORTLOCK

FINANCIAL DIRECTOR

Jessica attended St Mary's DSG in Pretoria following which she studied a BAccHons at the University of Stellenbosch. Jessica completed her Chartered Accountancy Articles at Investec South Africa (Johannesburg) which included a rotation to the Investec London office. After the completion of her articles, Jessica joined the family business in 2009. As an area accountant, she was responsible for the cost accounting and management reporting for a selection of the company's mining operations. She was furthermore involved in a selection of commercial matters including the compilation of tender documents. In 2019 Jessica became the Group Financial Director overseeing all financial aspects of the group.



FRANCOIS MILLER

PLANT DIRECTOR

Francois has completed a diploma in Mechanical Engineering as well as a course on Business Management at the Tukkies post graduate faculty. He joined Trollope Mining Services in February 1999 as an apprentice and mechanic and worked as such until 2003 when he was transferred to Tselentis as workshop manager. In 2007 he was made responsible for plant and equipment in the Mpumalanga area until 2009 when he was transferred to Head Office and promoted to Plant Manager. In 2019 Francois was appointed Group Plant Director and is responsible for all plant and equipment owned and operated by the group.



MARK TROLLOPE

OPERATIONS DIRECTOR

Mark attended St Albans College following which he completed a B.Eng Civil Engineering at Stellenbosch University. Mark joined Trollope Mining Services in May 2011 where he held numerous positions including that of a Site Engineer and Site Manager. During his career, Mark has built up extensive experience in the Mining Industry which include the management of operations in the Chrome, Coal, Gold, Diamond, Copper, Andalusite, Phosphate and PGM sectors. In 2019 Mark was appointed Group Operations Director overseeing all operations.



RAHIM KHAN

DIRECTOR

Born in Potchefstroom, South Africa, Rahim (BA, LL.B, Docts. Jur.) currently resides in Gaborone, Botswana, where he is practicing as Attorney of the High Court of Botswana, admitted 1980. His tertiary education includes studying at the University of Durban, University of South Africa and University of Leiden in the Netherlands followed by numerous international Law Internships. Rahim has served on several boards and has been appointed directorships for many companies including Group 5 Botswana and Basil Read. His extensive career includes being a Lecturer of Law at the University of Botswana, intermittently serving as Acting Chief Magistrate for Gaborone from 2000 to 2012 and being appointed honorary legal advisor to the German and British Embassies and serving as the Honorary Swedish Consul to Botswana.



PETER TROLLOPE

NON EXECUTIVE DIRECTOR

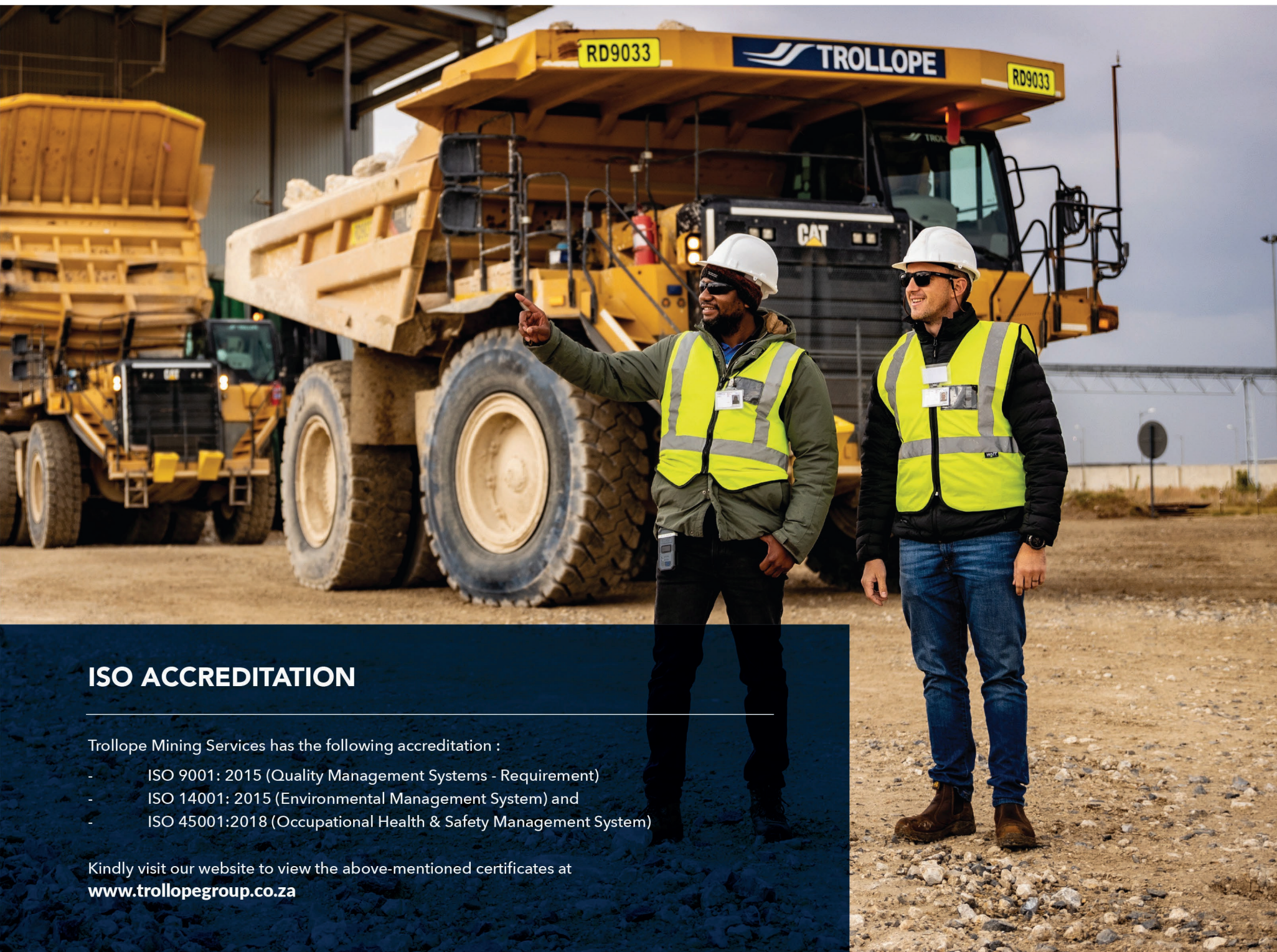
Born and raised on the family's cattle farm outside of Thabazimbi in Limpopo, Peter attended Laerskool Thabazimbi and matriculated from St Stithians College in Johannesburg in 1972. After 10 months of National service in the SADF he attended the Natal University, where he completed a Bachelor of Agriculture degree and then returned to the family farm. In 1975, the Trollope brothers purchased a D6 bulldozer from an army auction, hiring it to farmers in the area. This was to be the beginning of Trollope Mining Services. Peter is currently a shareholder of Trollope Mining Services with 40 years of experience in the Mining Industry.



JOHN TROLLOPE

NON EXECUTIVE DIRECTOR

Like his bother Peter, John also grew up on the family's cattle farm and after attending Laerskool Thabazimbi completed his high school education at St. Stithians College in Johannesburg. After matriculating he served 10 months in the SADF and then completed a B Com. (Marketing) degree at Natal University where he also played provincial rugby for Natal. In 1976 John relocated to Pretoria to play rugby for the Bulls, before returning to the farm at the end of 1978. John is a shareholder of Trollope Mining Services and is responsible for the plant and equipment division of the business with more than 40 years of experience in the mining sector.



ISO ACCREDITATION

Trollope Mining Services has the following accreditation :

- ISO 9001: 2015 (Quality Management Systems - Requirement)
- ISO 14001: 2015 (Environmental Management System) and
- ISO 45001:2018 (Occupational Health & Safety Management System)

Kindly visit our website to view the above-mentioned certificates at
www.trollopegroup.co.za

BROAD BASED BLACK ECONOMIC EMPOWERMENT

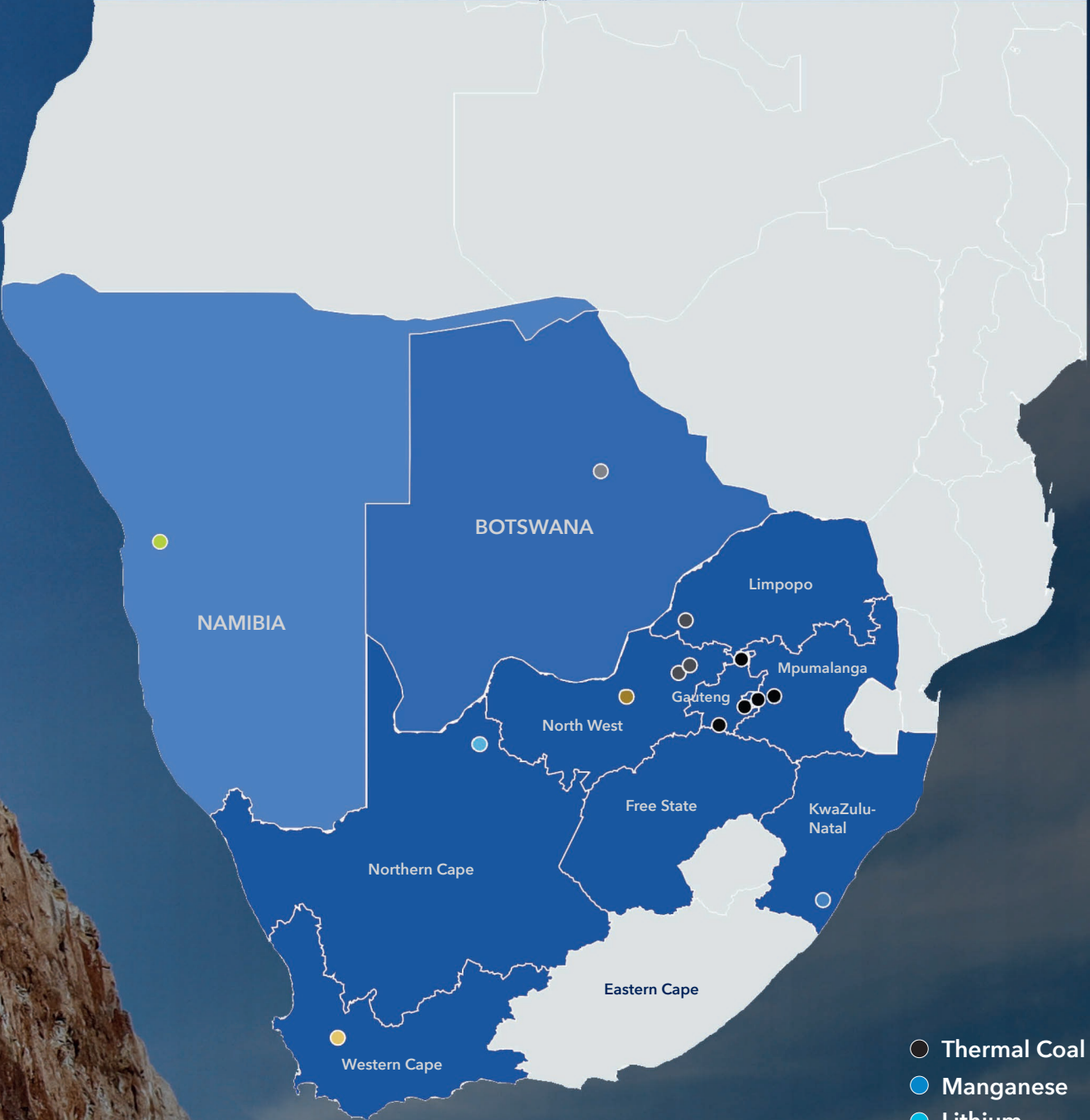
Trollope holds a level 2 BBBEE empowerment rating and has a 26% ownership by Black individuals. The company aligns its BBBEE policy with its group policy, affirming its dedication to contributing to the government's transformation objectives.

Trollope's corporate ethos revolves around equality, disregarding race, gender, religion, language, origin, or physical circumstances. Discrimination in any form is strongly opposed, with an employment equity plan in place that includes affirmative action and embraces all cultures represented in its workforce. The company actively engages with the communities surrounding its operations and maintains healthy industrial relations with them, recognizing the importance of maximizing local employment and utilizing local service providers.

The business strategy prioritizes employment and business equity through procurement practices. Trollope remains committed to empowerment across all operational levels, taking pride in its empowerment credentials. There's a growing focus on affirmative procurement to enhance business equity, with the goal of sourcing more goods and services from black empowered companies.

A management development plan is in place to develop black managers and transfer skills to black staff, with initiatives to increase black participation in Trollope's governance structures. The company continues to make strides in these areas, supported by its BBBEE policy, which underscores its commitment to socio-economic, enterprise and supply development.

GEOGRAPHIC FOOTPRINT



- Thermal Coal
- Manganese
- Lithium
- Platinum
- Diamonds
- Limestone
- Phosphate
- Uranium

HEALTH & SAFETY

Trollope, a privately-owned entity, upholds robust corporate practices and is renowned for delivering exceptional services in the opencast mining services sectors, prioritizing both productivity and safety. The company is committed to responsible health and safety management, an integral part of its business ethos.

Through strategic health and safety management and fostering a culture of awareness and accountability, Trollope aims to:

- Implement sound health and safety management principles and operational practices.
- Adhere to client specifications, rules, and requirements.
- Safeguard the health and promote the safety of personnel, customers, and the community.
- Remain attentive to customer needs, technological advancements, and socio-economic priorities.
- Mitigate and minimize hazards in the work environment.



OUR SAFETY POLICY

We are committed to:

- Providing a safe, hygienic, and healthy working environment to safeguard the well-being of our employees.
- Managing risks effectively rather than aiming for complete elimination.
- Ensuring our operations uphold the health and safety of the community.
- Adhering strictly to health and safety regulations and standards.
- Motivating, educating, and training employees to take personal responsibility for health and safety.
- Emphasizing the application of health and safety standards, such as fire protection and good work practices, to minimize losses and prevent accidents.
- Enlist the commitment of all staff to comply with the Act and Regulations and to manage and counter the hazards of our business through a well-practiced health and safety programme.
- Collaborating with professional bodies to develop realistic health and safety standards that balance priorities with economic considerations.
- Embedding safety as a core value that remains uncompromised.
- Striving for industry best practices and continual improvement.
- Proactively preventing accidents and fostering healthy working relationships.





CURRENT OPERATIONS

ENERGY

THERMAL COAL

Vlakvarkfontein Colliery | Ntshovelo Mining Resources

Mpumalanga, South Africa

Trollope's longest coal contract, we began mining at Ntshovelo's Vlakvarkfontein colliery in 2010. Our scope on this thermal coal operation includes drilling and blasting, Load and Haul and crush and screen of ROM. Over time the mining has migrated to include old underground workings, giving Trollope valuable experience in Pillar Mining.

Palesa Mine | HCI Coal

Mpumalanga, South Africa

The largest coal mine on Trollope's portfolio, HCI's Palesa mine has been in operation since 2009. This single seam, rollover operation currently produces more than 300 000t of coal a month. Trollope's scope includes drilling and blasting, loading, and hauling as well as ongoing concurrent rehabilitation.

Moabsvelden Mine | Salungano Group

Mpumalanga, South Africa

Salungano's Moabsvelden is situated within the Delmas region of the Mpumalanga coal fields. A multi - seam operation, Trollope's scope includes drilling, blasting, loading, and hauling of waste and coal. A greenfield project, the site is transitioning from boxcut phase to a steady state operation.

New Vaal Colliery | Seriti

Free State, South Africa

Seriti's New Vaal Colliery is situated on the banks of the Vaal review in the Free State province. Trollope is contracted to mine approximately 450 000 bcm of material per month. Our scope includes drilling and blasting, loading and hauling and crushing and screening of coal.

TNC Colliery | 2 Seam

Mpumalanga, South Africa

Trollope began working at 2 Seam's TNC colliery in late 2020. An intricate operation, this reserve was traditionally mined underground. Our current scope includes the mining of intact open castable portions of low strip ratio reserve, within these previously mined areas.

URANIUM

Langer Heinrich Uranium Mine | Palladin Energy

Erongo, Namibia

Langer Heinrich Uranium Mine commenced first production of U3O8 in 2007. Put on care and maintenance in 2018, the mine was re-opened in 2024. Trollope is responsibly for the reclaiming of medium and low grade ore stockpiles, as well as associated activities.

CURRENT OPERATIONS

BASE METALS

MANGANESE

Mokala Manganese Mine | Mokala
Northern Cape, South Africa

Mokala Manganese is located 5km north of Hotazel in the Kalahari manganese field of the Northern Cape which along with the Postmasberg manganese field constitute more than 80% of the world's Manganese reserves. Trollope provides a full turnkey solution which includes short term planning, drill and blast, load and haul and crush and screen of Ore for export.

LITHIUM

Highbury Mine | SA Lithium
KwaZulu Natal, South Africa

An exciting project, SA Lithium's Highbury mine is Trollope's first Lithium project and the first Lithium mine in Kwa-Zulu Natal. We are currently targeting 100 000t of lithium Pegmatite Ore per month. The scope includes drill and blast, load and haul and crush screen.



CURRENT OPERATIONS

PRECIOUS METALS & GEMSTONES

PLATINUM GROUP METALS

Zondereinde Mine | Northam Platinum
Limpopo, South Africa

Our oldest contract, Trollope has been on site since 1989. Materials handling of PGM Ore and Waste around the concentrator and smelter plants. This scope includes clearing and rehandling of Ore into various ROM bins, waste handling and haulage to dumps and civils and crushing work.

Pilanesberg Platinum Mine | Sedibelo Platinum
North West, South Africa

PPM is situated next to the Pilanesberg Game Reserve in the Northwest Province. Trollope is currently responsible for the load and haul operation of the Waste and Ore material. We are currently mining in excess of 1 million BCMs per month. Our scope includes the bulk mining of waste and selective mining of ore, internal waste and UG2.

Tharisa Mine | Tharisa Minerals
North West, South Africa

Our newest PGM project, Trollope is contracted to mine Bulk and Internal waste and the selective mining of the UG1 Chromitite reef. Our scope includes drilling, loading and hauling of more than 1 200 000 tonnes of material a month.

DIAMONDS

Karowe Diamond Mine | Lucara Diamonds
Central District, Botswana

Lucara's 100 percent owned Karowe diamond Mine, located in Botswana, has been in production since 2012 and is one of the world's foremost producers of large, Type IIA diamonds. Trollope is responsible for mining more than 350 000 BCM of Waste and ORe per month. Our scope also includes the rehandling of ore stockpiles to the plant and the occasional civils work.





CURRENT OPERATIONS

AGRICULTURE & CONSTRUCTION

LIMESTONE

Aganang Limestone Quarry | Sephaku Cement
North West, South Africa

Sephaku Cement's Aganang Quarry and Clinker plant, have been in operation since 2017. Trollope is responsible for drill, blast, load, and haul of approximately 250 000t per month of limestone from 5 different pits. Mining is executed using 100t Caterpillar 992 front end loaders and 90t 777 haul trucks.

PHOSPHATE

Elandsfontein Phosphate Mine | Kropz
Western Cape, South Africa

One of the only mines in the Western Cape, Trollope is responsible for the opencast mining of sand overburden and phosphate ore. Other services include feeding ROM into material sizer, removal of tailings, rehabilitation, and dewatering. This project is situated in a sensitive coastal environment and requires special mining and rehabilitation methods to minimize the impact of the operation on the surrounding environment.

OUR SERVICES

Trollope offers the full set of services associated with opencast contract mining in Africa. Our objective is to deliver efficient and dependable full-turnkey solutions to our clients, reducing their overhead needs. Alongside standard opencast earthmoving services, we specialize in short- and medium-term scheduling, certified training accredited by the MQA, optimization of Drill and Blast operations, implementation of Fleet management solutions, and on-site Environmental management planning.

In addition to traditional truck and shovel methods, Trollope is skilled in employing alternative earthmoving techniques tailored to a diverse range of deposit types. These methods encompass continuous mechanical mining for extensive, uniform, and softer deposits, Roll-over mining techniques for horizontal deposits, selective mining in inclined hard rock layered formations, and utilizing large front-end loaders across multiple blasted panels.



LOAD & HAUL

We possess a comprehensive load and haul fleet tailored for diverse operating environments. Our primary loading equipment typically consists of backhoe-configured excavators weighing between 70t and 230t. These excavators are carefully paired with hauling units, considering factors such as project location, operating conditions, and the scope of work. We adhere to a strict policy of keeping our primary loading fleet with low operating hours and strive to standardize equipment across sites whenever feasible. This approach holds particular significance in remote projects, where logistical challenges are more pronounced.

DRILL & BLAST

In numerous projects, we oversee and execute our own drill and blast operations, enabling us to maintain greater oversight of the processes within the opencast mining chain and mitigate risks associated with reliance on external parties. We utilize both top hammer and down-the-hole drill rigs, and we possess expertise in drilling across diverse rock types, including both hard and soft applications. Our in-house team specializes in designing and refining blast patterns to achieve optimal fragmentation, ensure clean loading services, maximum cast gain and enhance safety measures such as highwall stability. To achieve these optimizations, we employ a combination of conventional shock tube and electronic detonation techniques.



CRUSH & SCREEN

Crushing and screening represent a crucial phase in the ore processing sequence. We boast substantial expertise in crushing various ore types and meeting diverse product specifications. Our proficiency spans a wide array of materials, encompassing Coal, Manganese, Iron ore, PGMs, Phosphate, Lithium, and aggregate, among others. Our substantial fleet which is both diesel and electric driven, comprises mobile Jaw, Cone, and Impact crushers, alongside a variety of scalpers and screens for efficient sorting and sizing requirements.



MATERIAL HANDLING

Much like crushing and screening, materials handling often constitutes an important step in the ore processing chain. Trollope possesses an extensive fleet of Front-End Loaders, varying from 5t to 90t in operating weight. Our ongoing material handling ventures encompass the movement of both raw materials and concentrated products. We provide options for plant hire as well as measurable unit solutions, and take pride in our extensive experience across PGM, Chrome, Coal, Phosphate, Limestone, and Uranium operations.

CIVIL & MINE INFRASTRUCTURE

Over time, Trollope has developed an extensive collection of mine infrastructure projects, primarily linked to mines where we are operating. This collection encompasses various undertakings such as road construction, tailings storage facilities (TSF), pollution control dams (PCD), underground adits, as well as the construction of workshops, offices, and other smaller civil engineering works.



OUR CLIENTS

exxaro

KROPZ
FEED THE WORLD

HARMONY

AngloAmerican
PLATINUM

Pilanesberg
Platinum
Mines

MMG

TIGER
RESOURCES LIMITED

LUCARA
DIAMOND

ALUFER

AngloAmerican
KUMBA IRON ORE

MOKALA
MANGANESE MINE

HEI
Coal

MBUYELO
COAL

xstrata

Sephaku
CEMENT
Powered By
DANGOTE
CEMENT

Universal Coal

Salungano
GROUP

IMERYS

NORTHAM
PLATINUM HOLDINGS LIMITED

DE BEERS GROUP

TROLLOPE

Elandsfontein 412JR, Ekurhuleni
PO Box 10046, Fonteinriet, 1464
Tel: +27 (0)11 281 6000
Fax: +27 866 161 932
E-mail: admin@trollopegroup.co.za
www.trollopegroup.co.za